

# LADRV6-10

## 直动式溢流阀

### 说明 DESCRIPTION

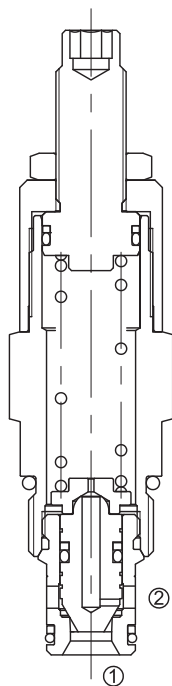
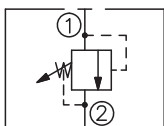
A cartridge-style direct-acting poppet-type relief valve  
直动座阀式溢流阀

### 工作 OPERATION

The valve prevents flow from ① to ② until the set crack pressure at ① is achieved. The poppet then unseats allowing flow from ① to ② protecting the circuit from over pressurization.

当在①口的压力超过调压弹簧设定的压力时，阀芯打开，①到②通，防止系统过压。

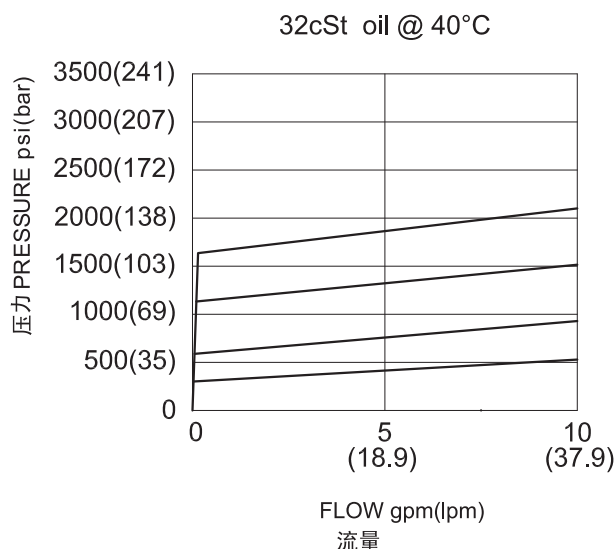
### SYMBOL



### 技术参数 SPECIFICATIONS

工作压力(Operating Pressure):	228bar
流量(Flow):	See PRESSURE DROP VS. FLOW graph.
内泄漏(Internal Leakage):	5 drops/min(滴/分). max. to 80% of nominal setting
闭合压力(Reseat Pressure):	80% of crack pressure 开启压力 (crack pressure at 0.95 lpm /0.25 gpm)
弹簧调压范围(Standard Spring Ranges):	3.45 to 41.38 bar; preset 预设定: 20.7bar 10.34 to 82.76 bar; preset 预设定: 41.4bar 17.24 to 158.62 bar; preset 预设定: 80.0bar 17.24 to 227.59 bar; preset 预设定: 113.8bar
温度(Temperature):	-40°F to +250°F (-40°C to +120°C)
过滤(Filtration):	See page (参见) N-1
油液(Fluids):	Mineral-based fluids with viscosities of 7.4 to 420 cSt.(矿物油粘度)
插孔(Cavity):	10-2, See page M-2
阀块材料(Body Material):	6061-T6 aluminum alloy rated to 207bar, Steel & Ductile iron rated to 350bar 6061-T6铝,允许使用最大压力207bar 钢和球铁允许使用最大压力350bar

### 压力 - 流量曲线 PRESSURE DROP VS.FLOW



## 订货代号 TO ORDER

LADRV6 - 10 - \* \* - \* / \*\*\*\* - \* \*

1   
 2   
 3   
 4   
 5   
 6

- |  |   |  |
|--|---|--|
| <p><b>1 功能</b><br/>LADRV6= 直动式溢流阀<br/>Direct-Acting Relief Valve</p> | <p><b>3 弹簧调压范围 Spring Ranges</b><br/> <b>6</b>=50-600psi(3.45-41.38bar)<br/>                     Preset:300psi(20.7bar)<br/> <b>12</b>=150-1200psi(10.34-82.76bar)<br/>                     Preset:600psi(41.4bar)<br/> <b>23</b>=250-2300psi(17.24-158.62bar)<br/>                     Preset:1160psi(80bar)<br/> <b>33</b>=250-3300psi(17.24-227.59Bar)<br/>                     Preset:1650psi(113.8bar)</p> | <p><b>5 设定压力 Setting In Bar</b><br/>                     空白 Blank= 预设定 Preset<br/>                     例 Example: 0150=150bar</p>                                |
| <p><b>2 规格 Size</b><br/>10=10 规格</p>                                 | <p><b>4 调节 Adjustment</b><br/>                     K= 调节手轮 1-1/2" Dia Knob<br/>                     空白 Blank=1/4"内六角调节杆<br/>                     for 1/4" Hex Allen Head</p>  | <p><b>6 阀块油口 Body Porting</b><br/>                     空白 Blank= 不带阀块 None<br/> <b>6T</b>=SAE6<br/> <b>8T</b>=SAE8<br/> <b>3G</b>=G 3/8<br/> <b>4G</b>=G 1/2</p> |

※ 阀块详见章节 K-4  
其它螺纹油口也是可选择的  
Other Porting is Available

## 安装尺寸 INSTALLATION DIMENSIONS

Unit=Millimeters

